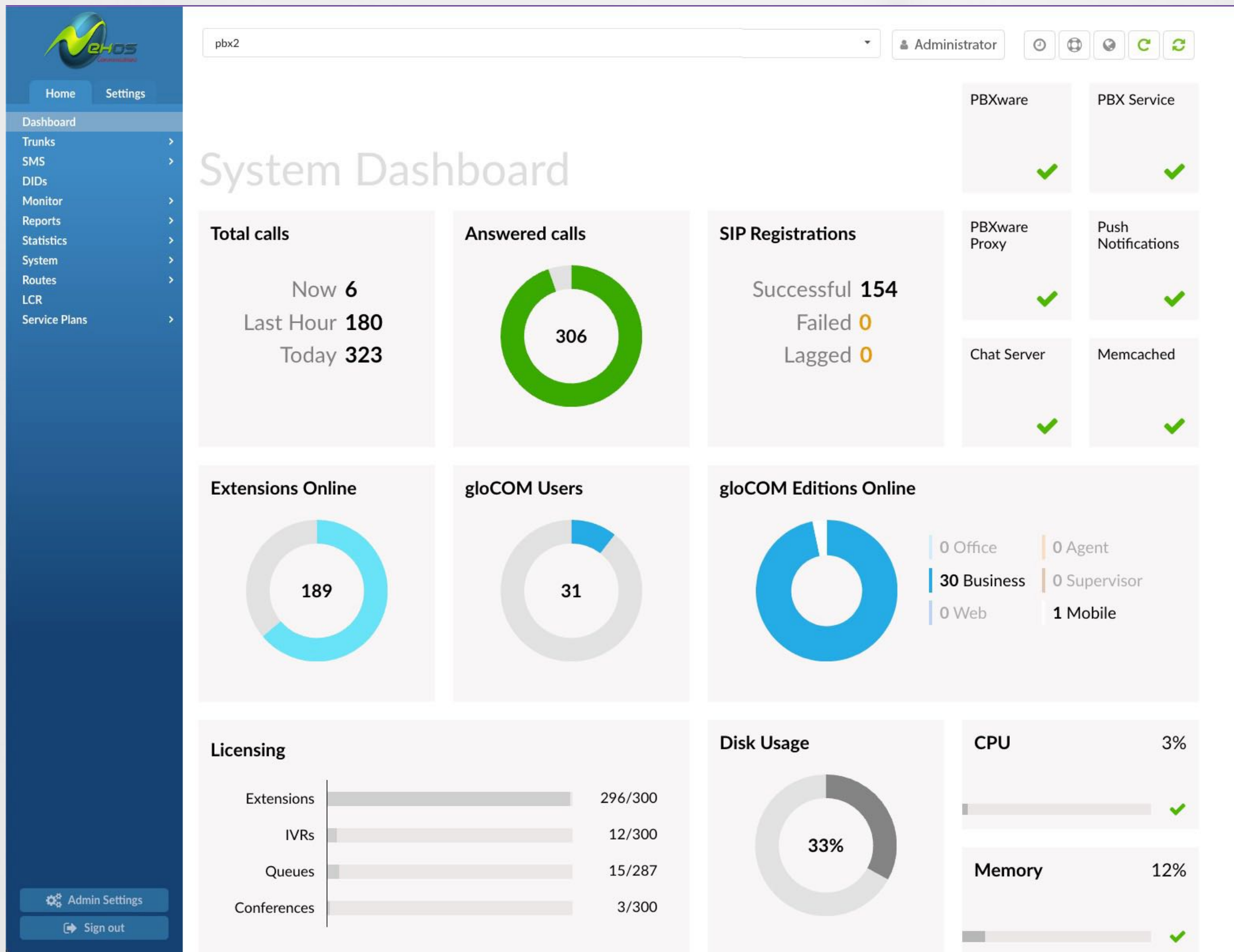


Your Ultimate Solution for Seamless Telephony

Discover what makes PBXware the #1 cloud phone system



PRODUCT OVERVIEW

PBXware



What is PBXware?

Welcome to one of the most economic workflow improvements in communication technology.

PBXware, one of the world's most advanced IP PBX Professional Telephony Platforms, stands as a mighty and innovative tool that has been empowering businesses and governments for over two decades.

This mature and well-established solution has consistently elevated operational efficiency and communication dynamics.

Tailored Solutions for Enhanced Performance

With over 20 years of expertise in cloud phone systems, call centers, and unified communications, Nehos provides the industry's leading tools and solutions. Our extensive experience and in-depth knowledge ensure that we can tailor a comprehensive voice and data network solution to meet the unique needs of your business. Whether you're just starting out or looking to enhance your current operations, trust Nehos to deliver the perfect solution.



PBXware

Essential PBXware Features & Benefits



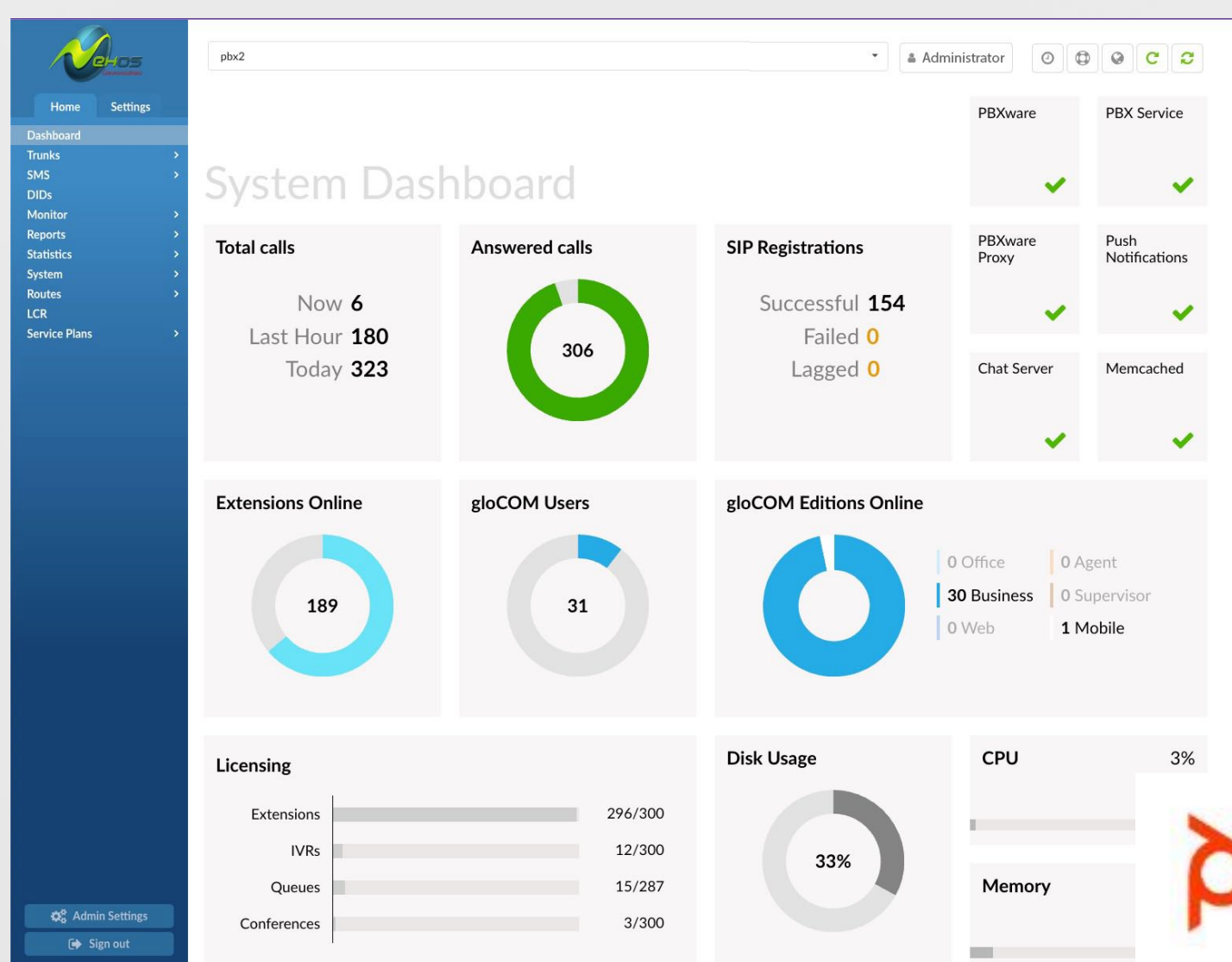
EFFORTLESS SETUP WITH GUIDED PRECISION

Experience a fast and easy system setup with PBXware's streamlined process. Our step-by-step setup wizard ensures a hassle-free installation journey, guiding users with precision and simplicity.



INSIGHTFUL DASHBOARD FOR SEAMLESS NAVIGATION

Navigate effortlessly through a user-centric dashboard that consolidates crucial data. Gain insights into your system's functions, hardware utilization, core service status, call statistics, SIP registrations, and more, all presented intuitively for informed decision-making.



USE YOUR EXISTING IP PHONES

PBXware is compatible with most IP Phones on the market. Use the same extension on multiple devices. Save time for both your IT personnel and your users by using features such as automated provisioning, busy lamp field (BLF), hot desking, and more. PBXware supports autoprovisioning for more than 150 different UAD models from 20 different vendors.



UNIFIED COMMUNICATIONS FOR ENHANCED PRODUCTIVITY

Unify communication features under one interface, eradicating the need for constant tab-switching. By seamlessly integrating functionalities, gloCOM elevates productivity and user experience.



ENHANCED SECURITY AND MANAGEMENT WITH ACTIVITY LOGS

Track user activities through comprehensive activity logs. By monitoring access, changes, and file interactions, PBXware optimizes time management, bolsters security, and provides deeper insights into your business operations.

Tenant	Date	User	IP Address	Page	Event	Data
1	20 Apr 2018 13:04:22	Administrator (Administrator)	10.1.190.12	Start Page	Login	
1	19 Apr 2018 16:18:13	Administrator (Administrator)	10.1.0.107	Start Page	Login	
1	19 Apr 2018 15:24:50	Administrator (Administrator)	10.1.0.107	Start Page	Logout	
1	19 Apr 2018 14:49:46	Administrator (Administrator)	10.1.0.107	Start Page	Login	
1	16 Apr 2018 11:47:29	Administrator (Administrator)	10.1.190.12	Reports > CDR Settings	Edit	ID 67
201	16 Apr 2018 09:56:23	Administrator (Administrator)	10.1.190.12	IVR	Add	EXT ID 801 1042
1	16 Apr 2018 09:27:56	Administrator (Administrator)	10.1.190.12	Start Page	Login	
1	09 Apr 2018 14:35:08	Administrator (Administrator)	10.1.0.107	Start Page	Login	
1	06 Apr 2018 13:55:55	Administrator (Administrator)	10.1.0.107	Start Page	Login	
201	06 Apr 2018 11:53:14	Administrator (Administrator)	10.1.0.107	Reports > CDR	Listen	ID 507
201	06 Apr 2018 11:51:43	Administrator (Administrator)	10.1.0.107	Reports > CDR	Listen	ID 505



SEAMLESS CALL RECORDINGS PLAYBACK

Access call recordings directly from your browser with PBXware's integrated playback interface. Effortlessly navigate recordings and gain valuable insights with a simple click.



EFFICIENT ONBOARDING WITH EMBEDDED DOCUMENTATION

Accelerate onboarding with concise, feature-specific documentation available within PBXware's interface. Users can swiftly familiarize themselves with the software's functionalities, greatly reducing learning curves.

The screenshot displays the PBXware administration interface for editing an extension. The main form includes fields for General information (Extension Number: 111, Name: Reception, E-mail: reception@testing.com, Department: None), Authentication (Username: 600111, Secret: A%_S0u1tAwFvNp31, User Password: %zYun1hGd4w6O-5C, PIN: 2080), PIN Based Devices (PBD PIN: 20733), Call Rating (Call Rating: Not Set, Service Plan: Please select..., Slave: Not Set), and Master Account Code, Reminder Balance, and Credit Limit. The Authentication section's Username field is highlighted with a blue box. To the right, the 'Embedded Documentation' panel shows a 'Username' section with a 'Description' and an 'Example'.

Username

Description
Username used by the UAD/Phone for the registration with the TestName.MT By default, this field is the Extension network number prefixed with tenant code and cannot be changed.

Example
If the extension number is 1008 and tenant code is 300, then the Username will be "3001008".



NEHOS SUPERIOR NETWORK INFRASTRUCTURE

With our own robust network and infrastructure, we guarantee reliable and high-quality services. Nehos has state of the art intrusion detection and anti-toll fraud systems in place to protect your phone system and PBXWare 24/7



ENHANCED DEVICE CERTIFICATE VALIDATION

Elevate security measures with PBXware's mTLS implementation. Trust client certificates through manufacturer root CA validation, fortifying server-side authentication.

The screenshot shows the 'Auto Provisioning' configuration window. The 'TLS Client Certificate Validation' option is highlighted with a red box and is set to 'Yes'. Other settings include LAN and WAN Hostname/IP (10.1.160.11), Max. Number of requests (100), and various server fields.

Setting	Value	Status
LAN Hostname/IP:	10.1.160.11	✓
WAN Hostname/IP:	10.1.160.11	✓
Max. Number of requests:	100	✓
gloCOM LAN server:		
gloCOM WAN server:		
TLS Client Certificate Validation:	Yes No Not Set	
Enable TFTP:	Yes No Not Set	
Use DNS SRV when possible:	Yes No Not Set	
WAN Host for DNS SRV:		

CRM Integrations

PBXware seamlessly integrates with a great number of vital business applications like Salesforce, SugarCRM, Zendesk, ZOHO, MS Dynamics, and more. Bridge communication gaps with ease and streamline operations.



24/7 Expert Support at Your Fingertips

Our dedicated support team is available round-the-clock to assist you with any issues or questions. Our highly trained experts are always available to address any PBX system-related queries, ensuring seamless operations and peace of mind.

Customized Solutions

We offer tailored telecommunications solutions to meet the unique needs of your business. PBXWare is suitable for small to large business including call centre

CONTACT NEHOS COMMUNICATIONS TODAY

Find out more about our services. Nehos Voice and Broadband fully featured solutions

Phone: 1300 726 889 Email:
sales@nehos.net
www.nehos.net

